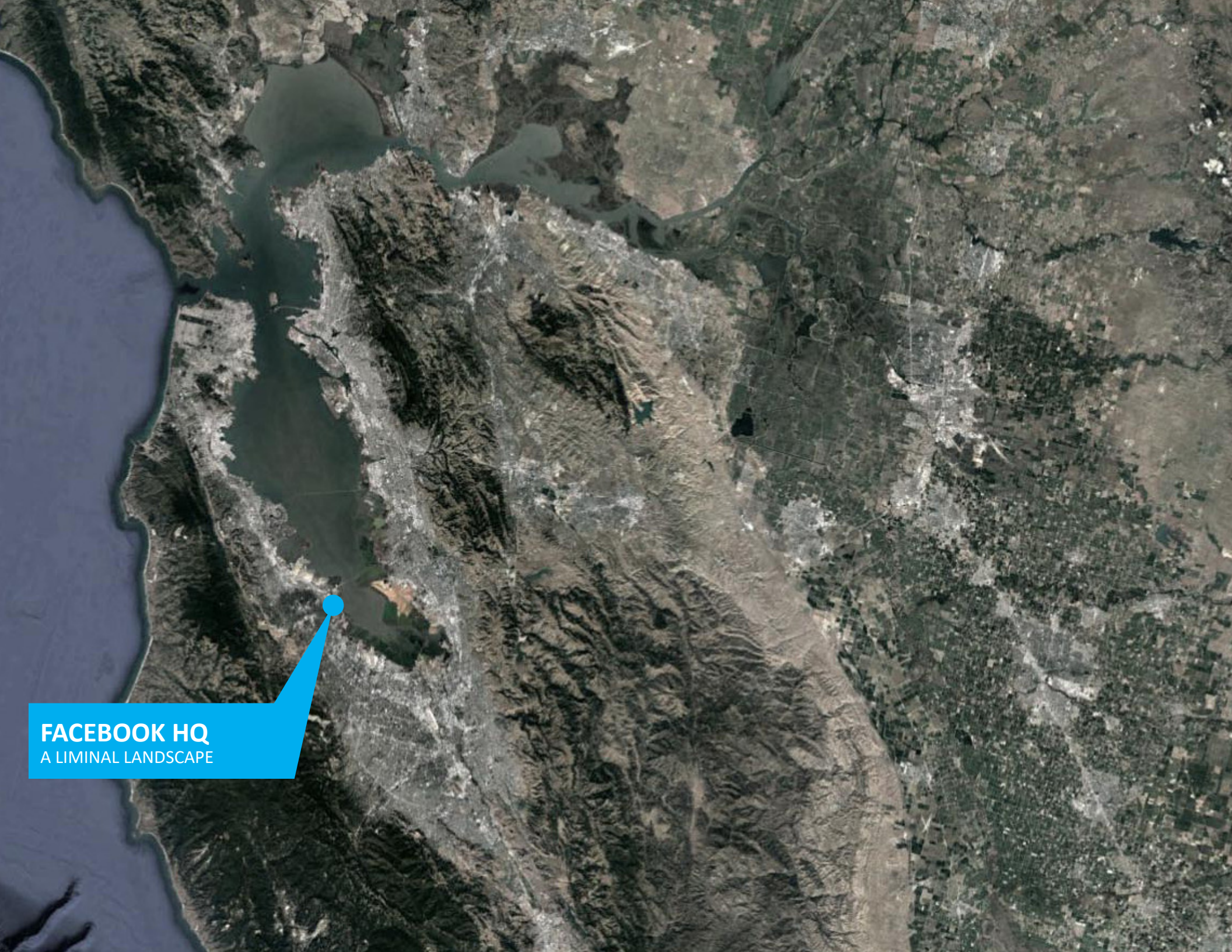


FACEBOOK HQ: A LIMINAL LANDSCAPE



FACEBOOK HQ
A LIMINAL LANDSCAPE

MARSH ROAD



BAYFRONT EXPRESSWAY



**DUMBARTON
BRIDGE**



**DUMBARTON
RAIL CORRIDOR**



**WILLOW
ROAD**

BAYFRONT CAMPUS
MENLO PARK, CA

101

BAYFRONT CAMPUS

BAYFRONT CAMPUS

MPK 23

MPK 22

MPK 21

MPK 20



INTEGRATION OF BUILDING + LANDSCAPE

MPK 20





MPK 20





MPK 21

MPK 20

CONTINUITY + ITERATION



MPK 20

MPK 21

MPK 22

MPK 23





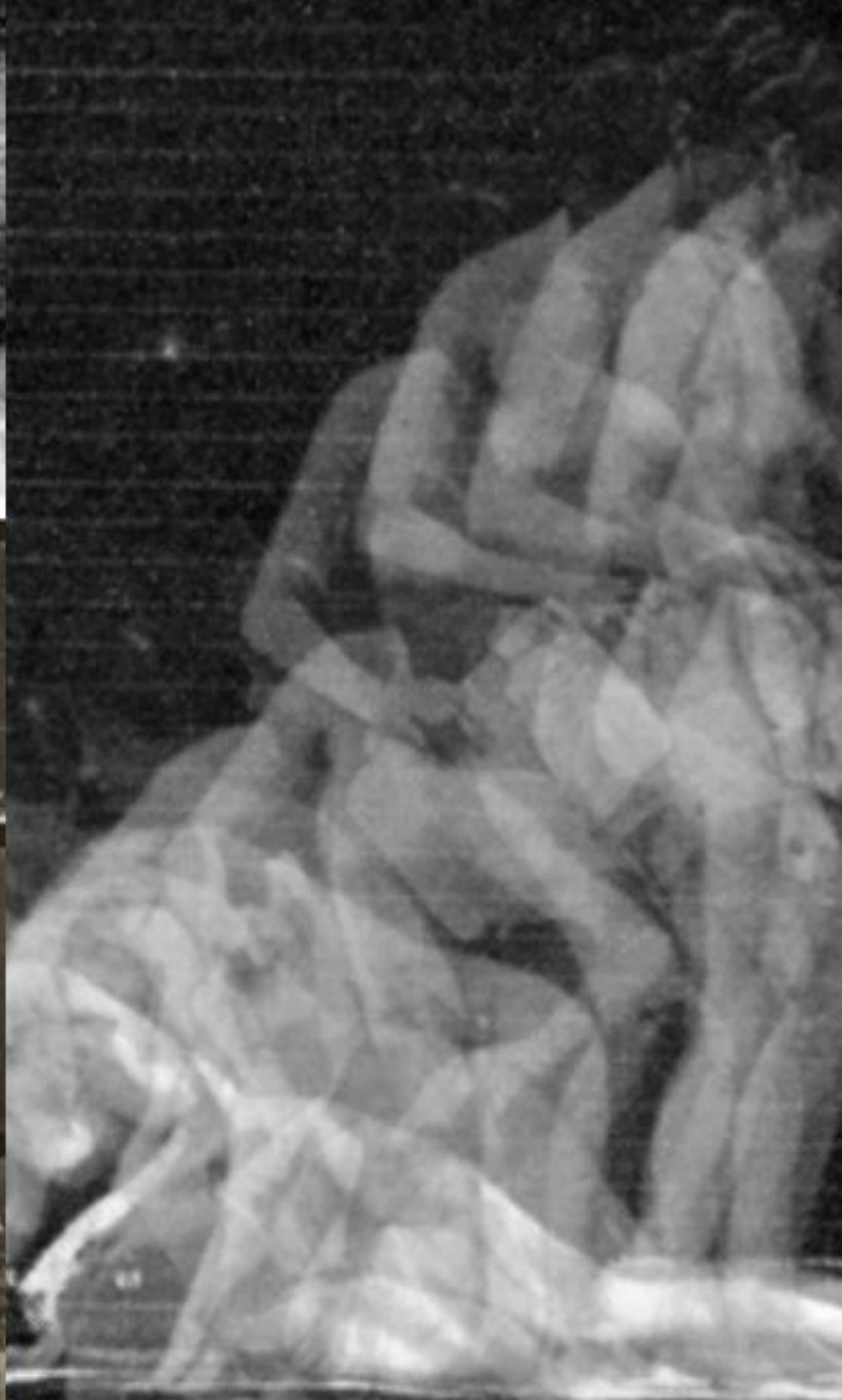
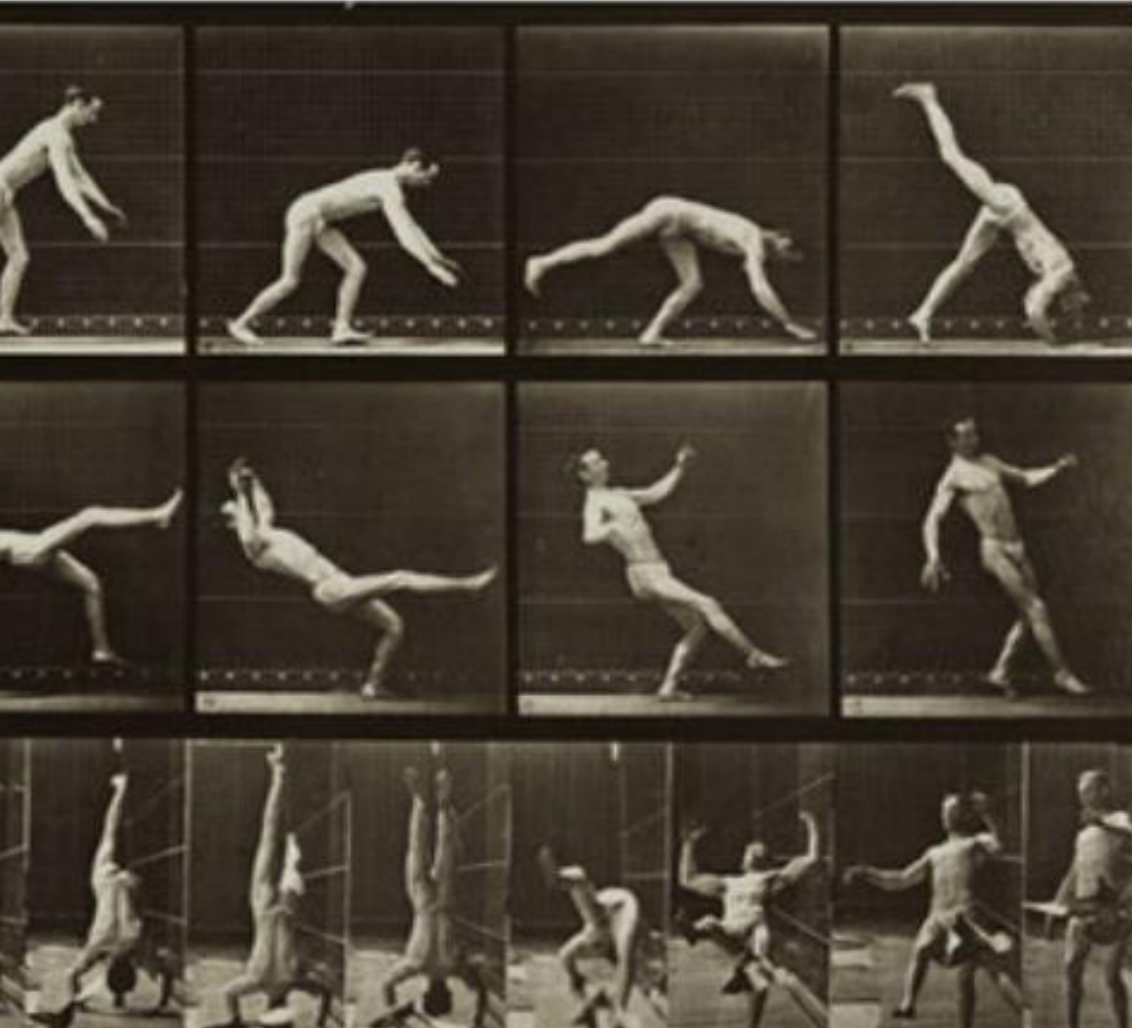
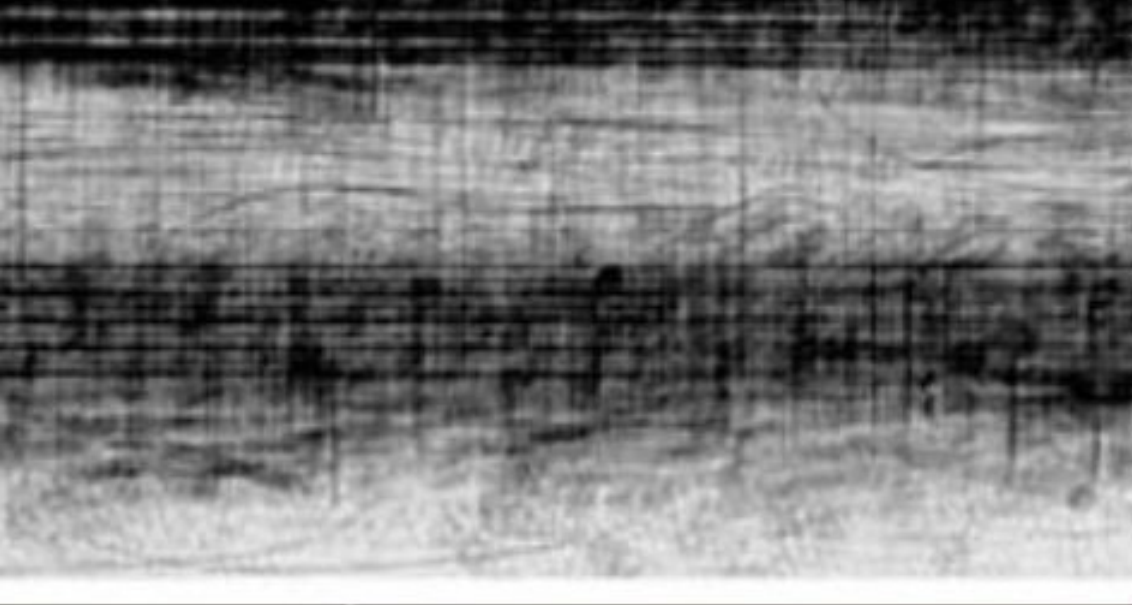








CINEMATIC LANDSCAPES

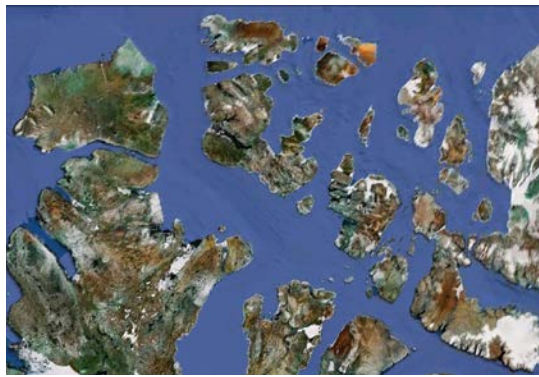
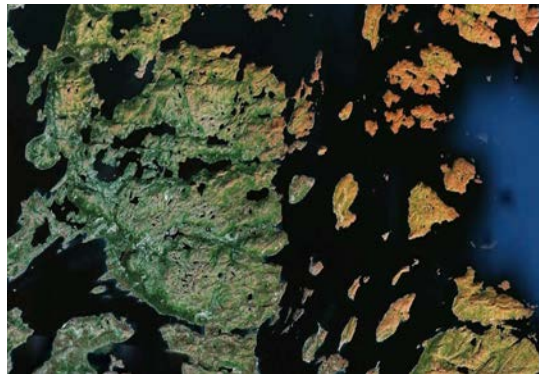


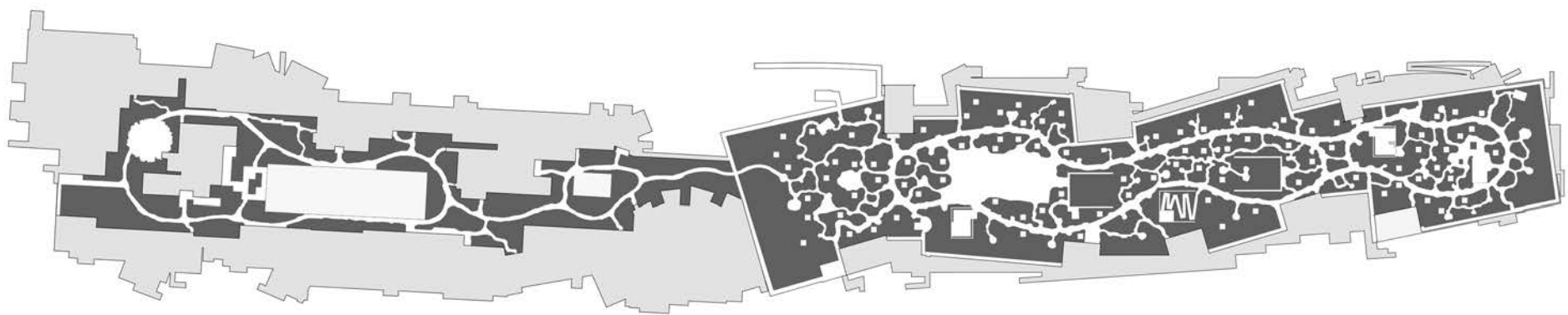
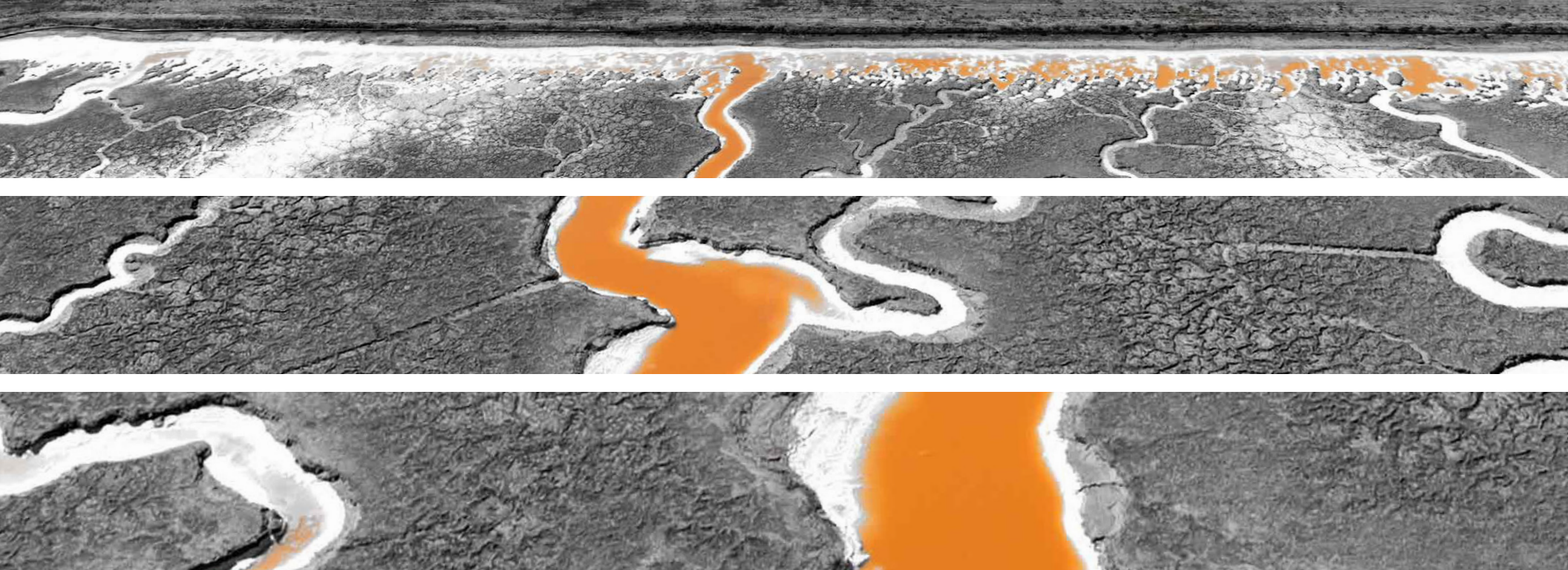






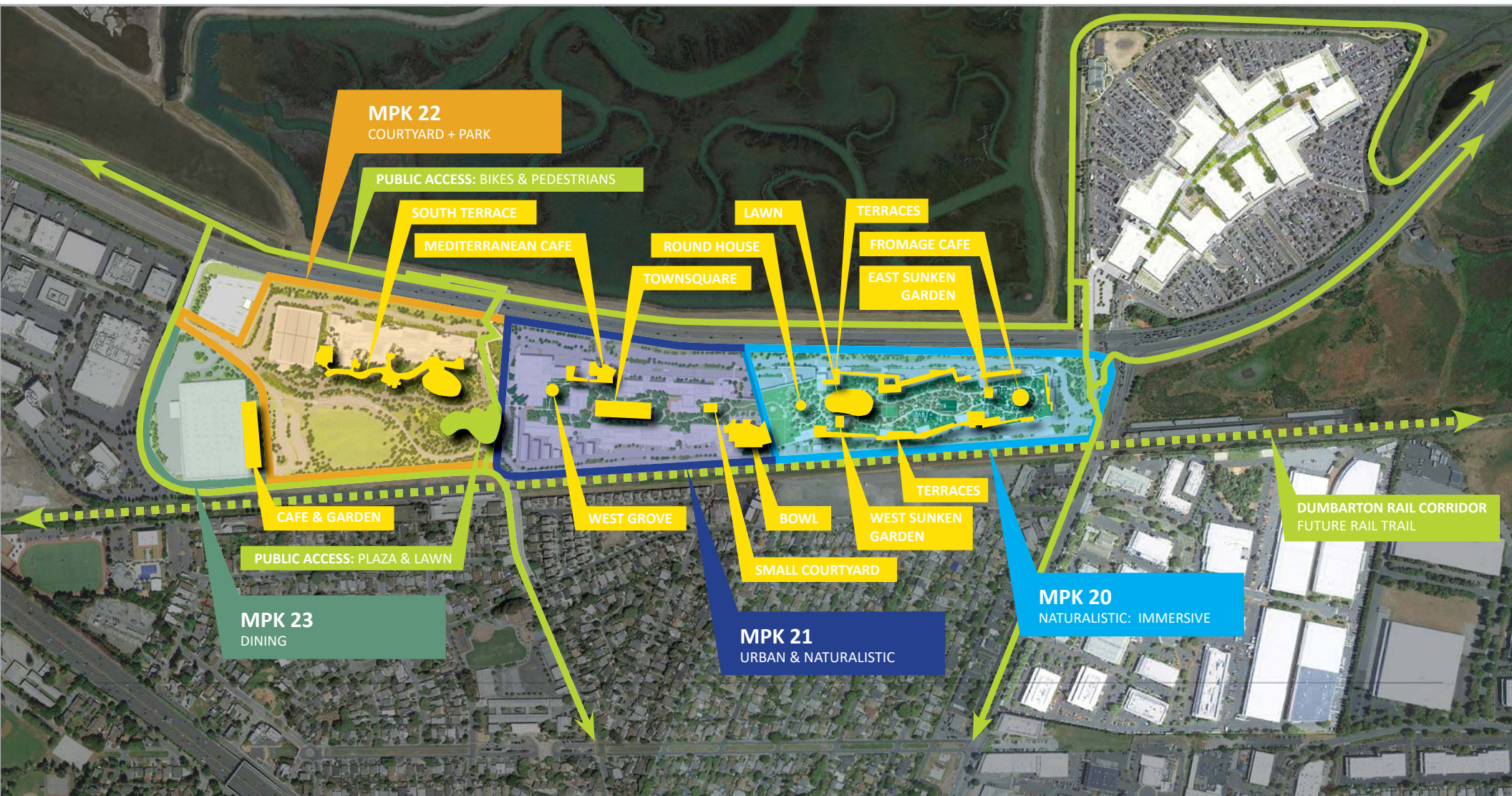








ACTIVITY + USE







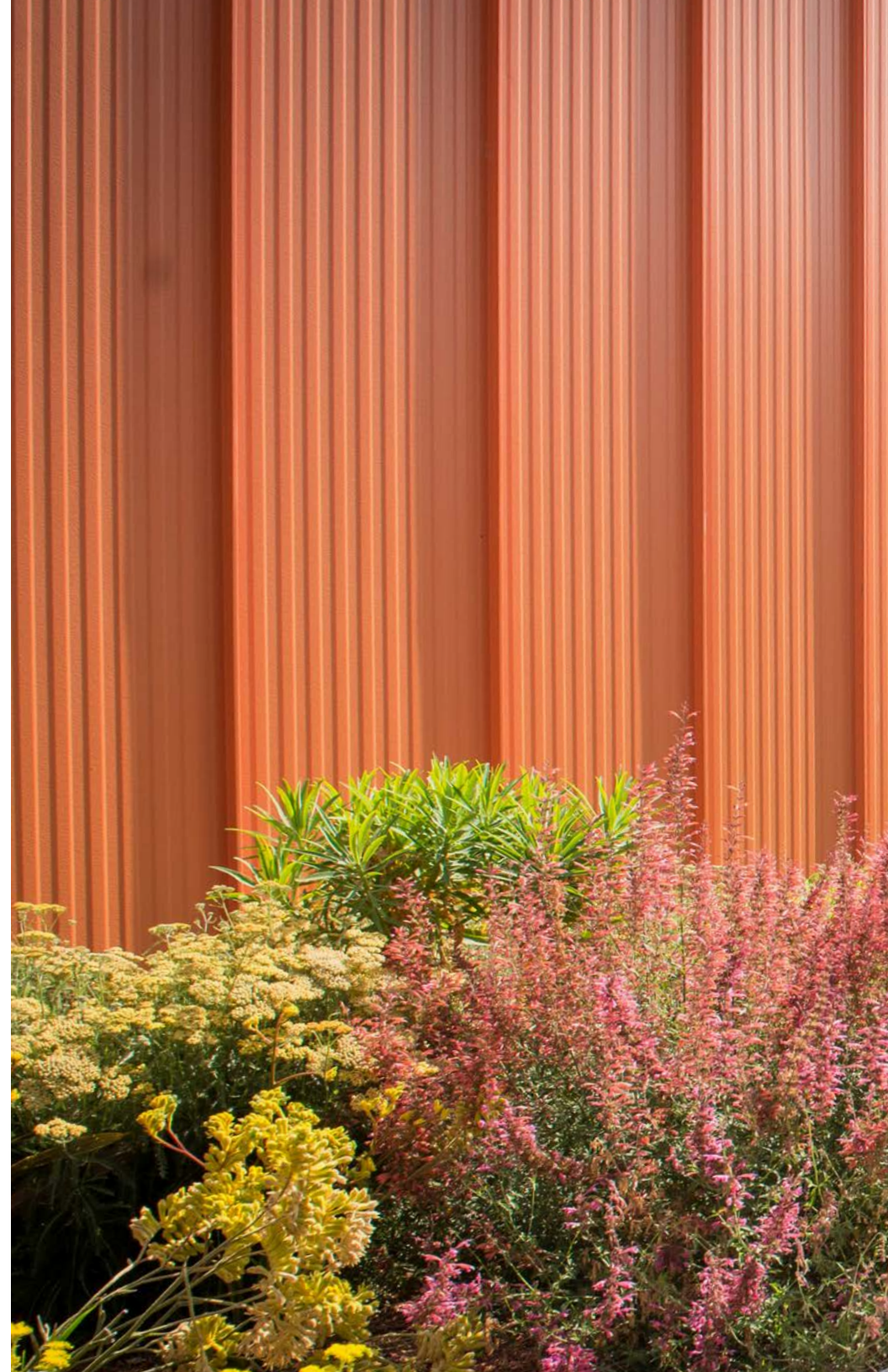






BOTANICAL + ECOLOGICAL DIVERSITY

“It is interesting to contemplate an entangled bank, clothed with many plants of many kinds, with birds singing on the bushes, with various insects flitting about, and with worms crawling through the damp earth, and to reflect that these elaborately constructed forms, so different from each other, and dependent on each other in so complex a manner, have all been produced by laws acting around us.” (Darwin, Revised edition 2008)







TECHNOLOGY + STEWARDSHIP

Skylights - Dispersed throughout the landscape, provides daylighting into the office space below.

Ha-Ha - The garden wall is held back from the perimeter building edge, eliminating the need for a guardrail and erasing the horizon.

Maintenance Path - 6'w path at roof perimeter

Stabilized Crushed Stone Path - Inspired by the adjacent salt flats, the SCSP path provides fluid 1/2 mile loop.

Meadow & General Landscape - 2' Average Soil Depth

Lawn - 1' Average Soil Depth

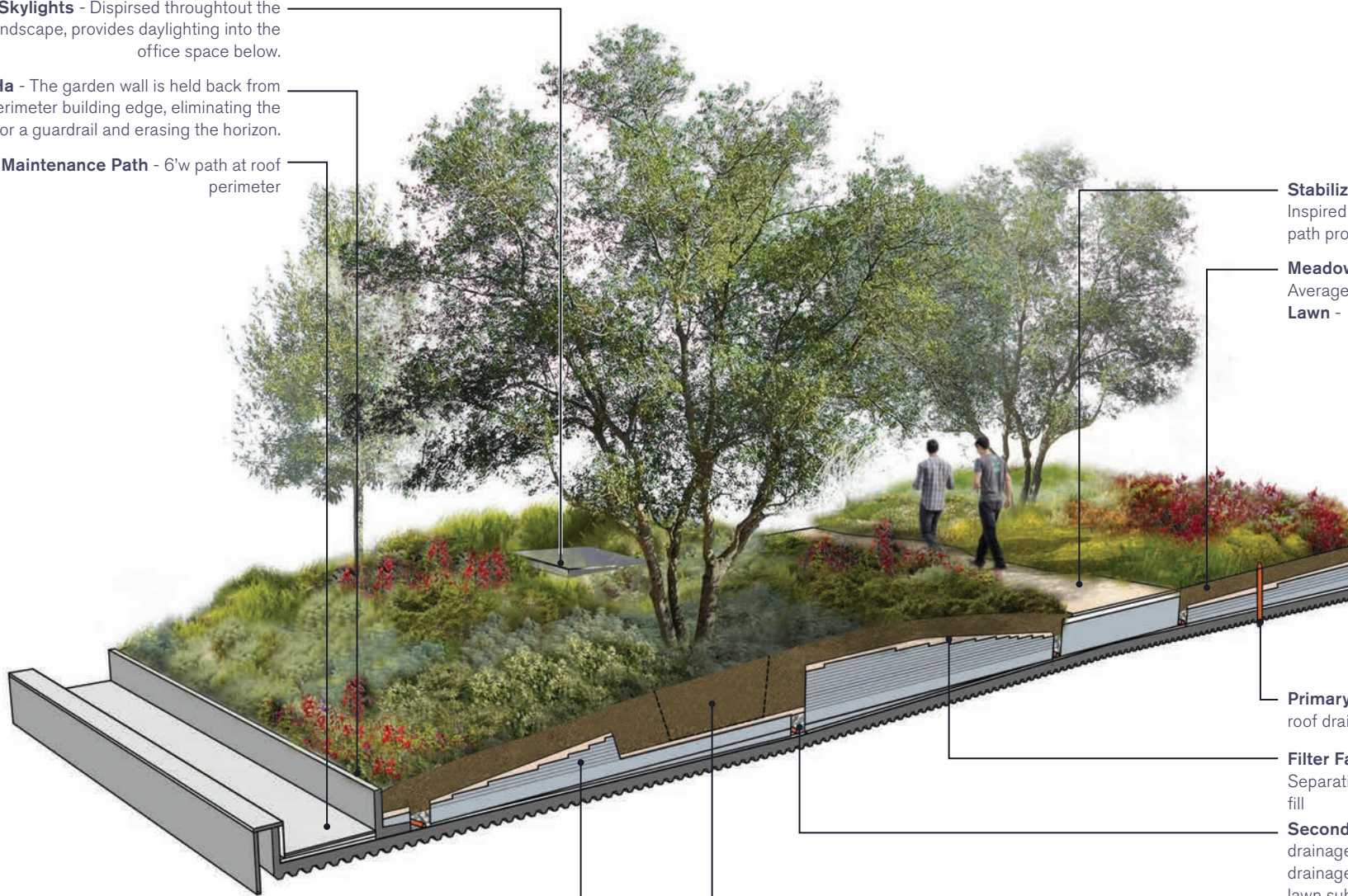
Primary Drainage - Direct connection to roof drain at building.

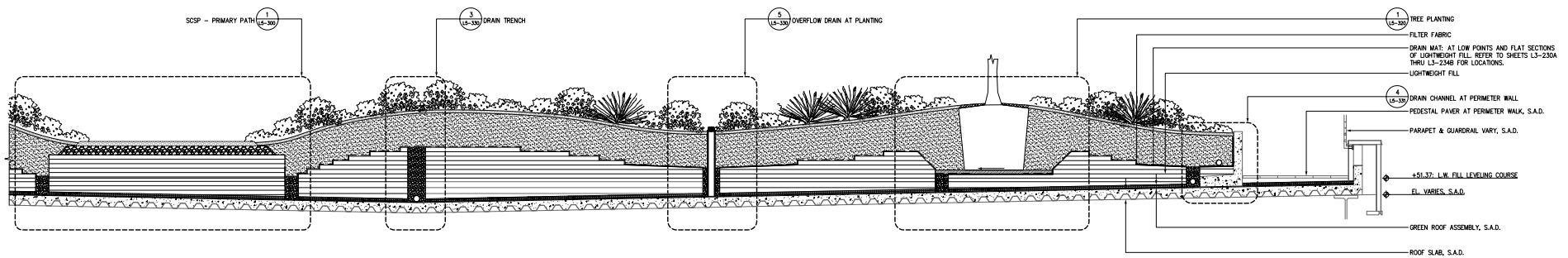
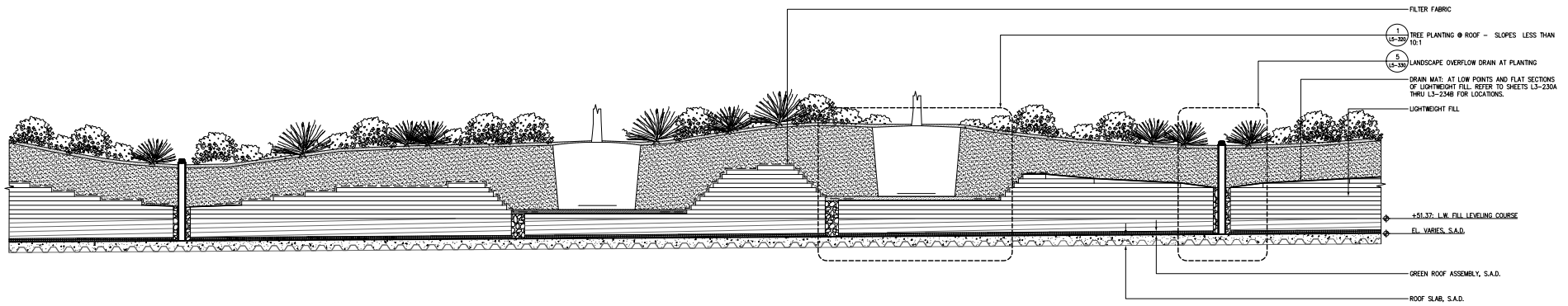
Filter Fabric/Drainage Course - Separation layer between soil & lightweight fill

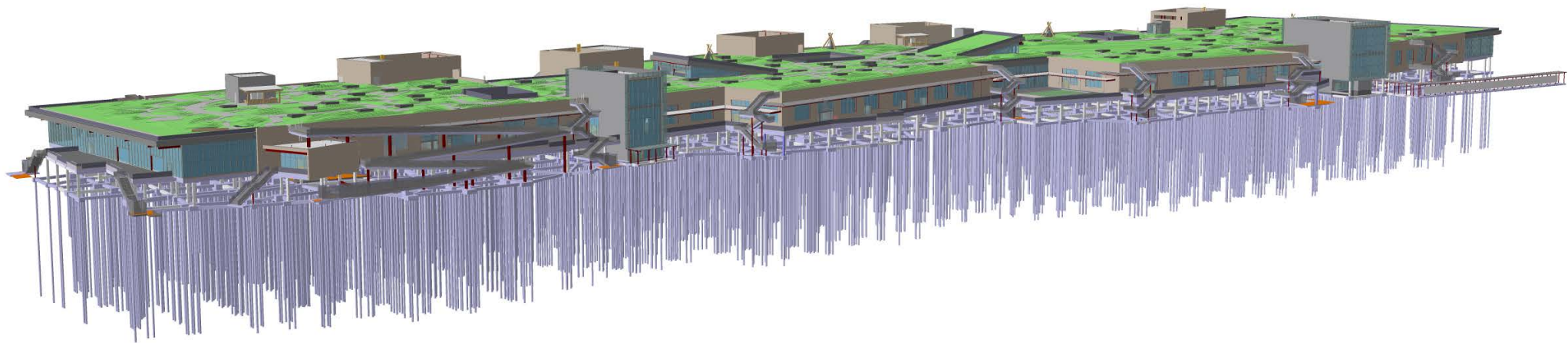
Secondary Drainage Channel - Designed drainage systems provide additional drainage at low points, tree locations, and lawn subdrainage.

Lightweight Fill - Shaped topography controls soil depth & loading

Tree Pits - Soil depths were sized and based on tree species and size.









WORKPLACE AS LANDSCAPE

“This is the point I want to make: the experience of nature, to those who have learned to absorb it, is magic. The more you draw, the more there is to draw. In early visits to wilderness environments, you will miss out most on what’s interesting. You will subsequently spot more, and then more, and begin to put names on what you see. Then will come still more details. Each species, you will learn, is a story in itself.” (Wilson, 2017)





